

**M** Mariel  
Tavarez  
- REAL ESTATE -

SHOMA  
*bay*



## ACERCA DE MÍ

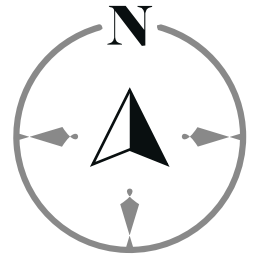
Soy una profesional en administración de empresas y contabilidad, con una sólida base en finanzas. Con más de 10 años de experiencia en el dinámico mercado inmobiliario de Miami, Orlando y el Sur de la Florida, me he posicionado como una experta en asesorar a inversionistas extranjeros, guiándolos a tomar decisiones informadas y estratégicas.

Mi compromiso con la confidencialidad, el acompañamiento y la asesoría personalizada e integral me convierte en una aliada invaluable para quienes buscan maximizar el potencial de sus inversiones. Mi pasión por apoyar a mis clientes en la realización de sus sueños es el motor que impulsa mi enfoque dedicado y profesional en cada transacción.

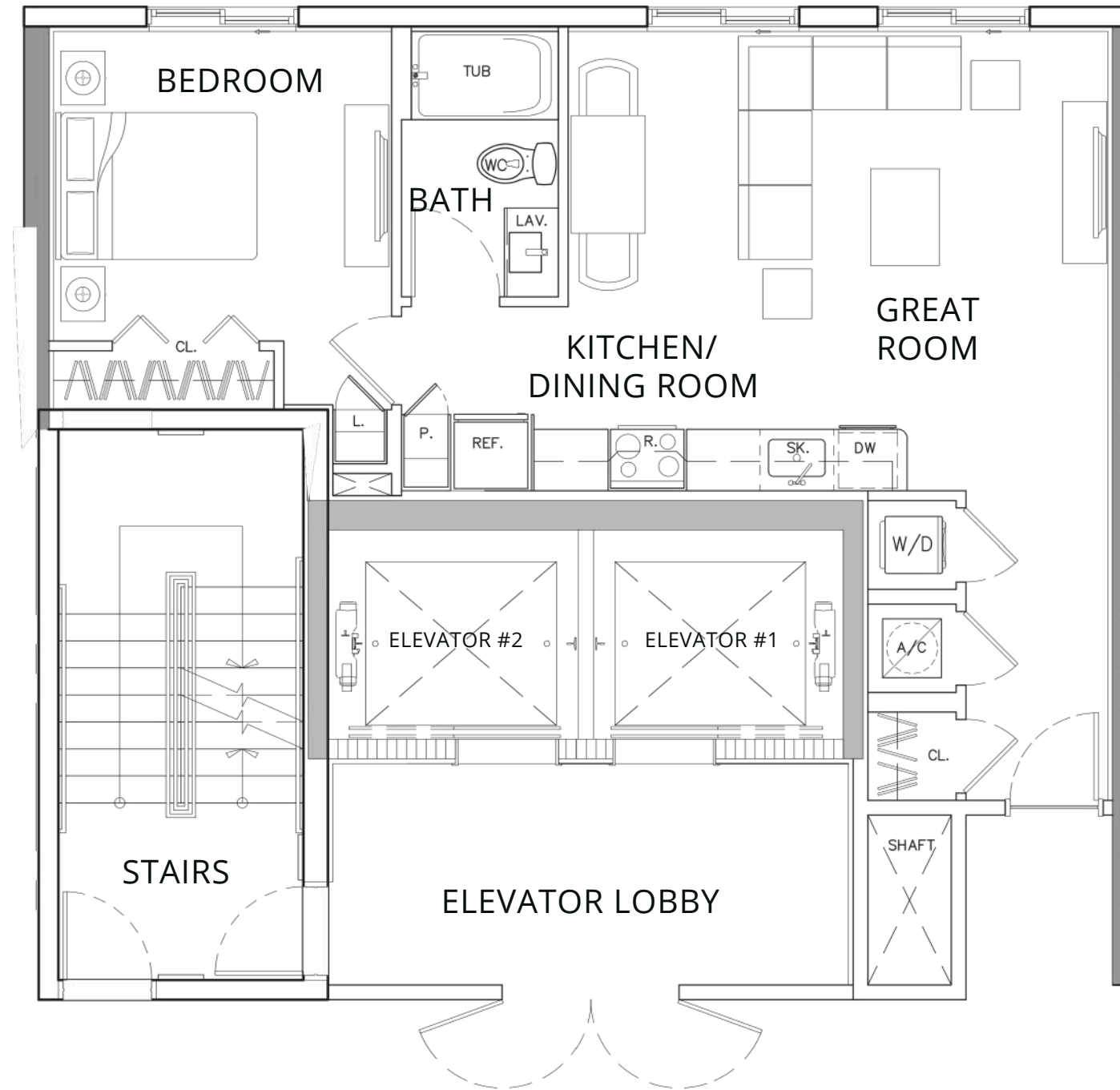
MARIEEL  
TAVAREZ



SHOMA  
bay



NORTH LINE KEY:(01)



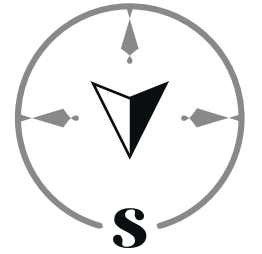
(1 BD/1 BTH)

GROSS A/C AREA = 724 SQ. FT.

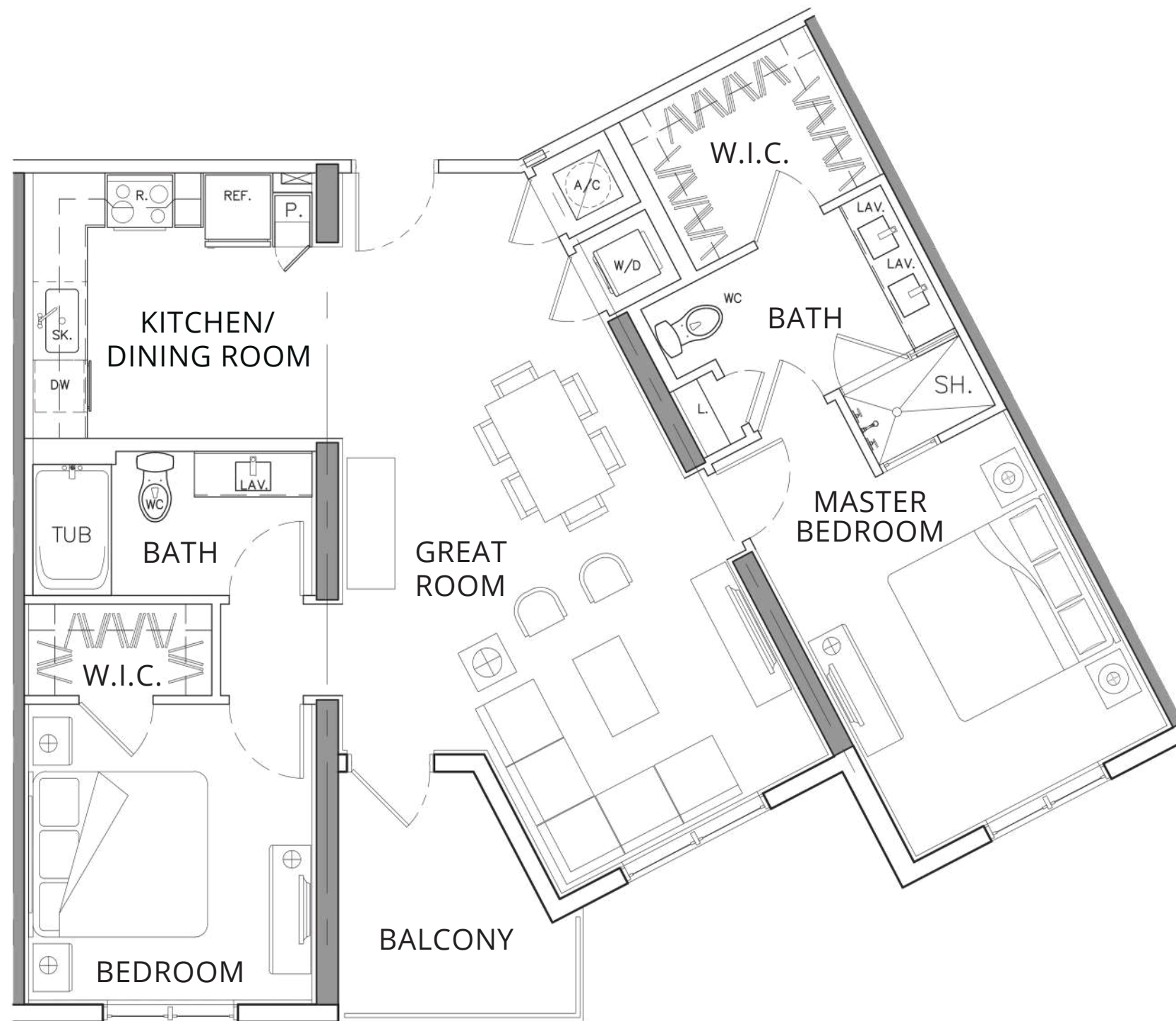
(20 DU'S)

All plans, features and amenities depicted herein are based upon preliminary development plans and are subject to change without notice in the manner provided in the offering documents by the developer. No guarantees or representations whatsoever are made that any plans, features, amenities or facilities will be provided or, if provided, will be of the same type, size, location or nature as depicted or described herein. The sketches, renderings, graphic materials, plans, specifications, terms, conditions and statements contained are proposed only, and we reserve the right to modify, revise or withdraw any or all of same in our sole discretion and without prior notice.

SHOMA  
bay



SOUTH LINE KEY: (05)

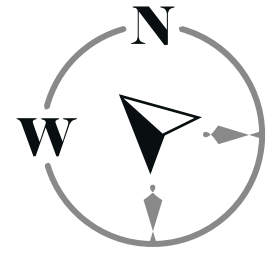


(2 BD/2 BTH)

GROSS A/C AREA = 1150 SQ. FT.  
BALCONY = 75 SQ. FT.

(10 DU'S)

All plans, features and amenities depicted herein are based upon preliminary development plans and are subject to change without notice in the manner provided in the offering documents by the developer. No guarantees or representations whatsoever are made that any plans, features, amenities or facilities will be provided or, if provided, will be of the same type, size, location or nature as depicted or described herein. The sketches, renderings, graphic materials, plans, specifications, terms, conditions and statements contained are proposed only, and we reserve the right to modify, revise or withdraw any or all of same in our sole discretion and without prior notice.



NORTH WEST LINE KEY:(13)

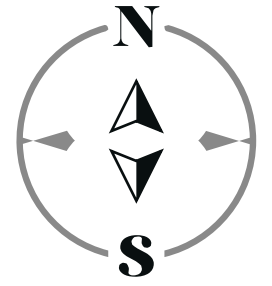


(2 BD/2 BTH)

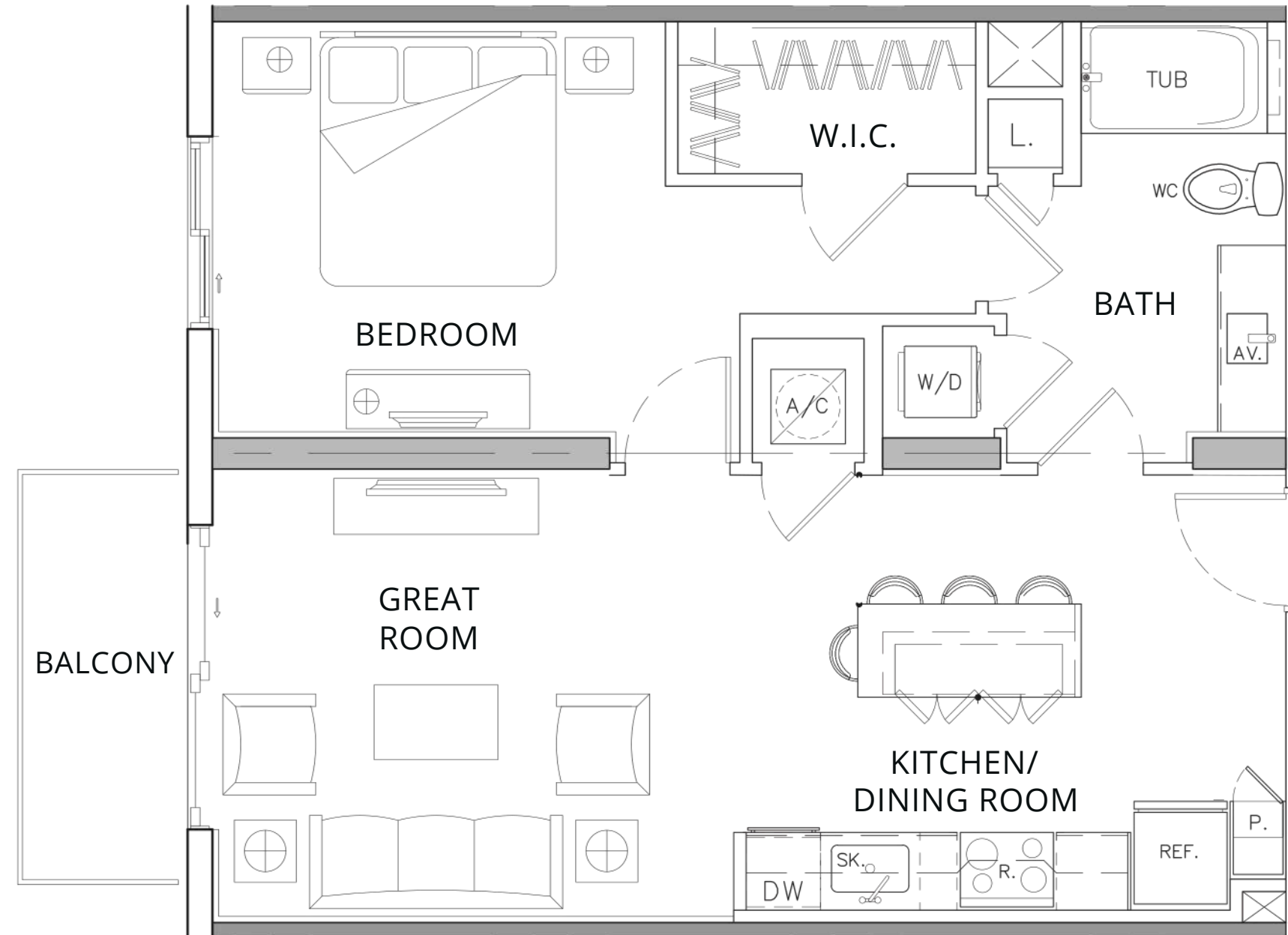
GROSS A/C AREA = 1237 SQ. FT.  
BALCONY = 143 SQ. FT.

(20 DU'S)

All plans, features and amenities depicted herein are based upon preliminary development plans and are subject to change without notice in the manner provided in the offering documents by the developer. No guarantees or representations whatsoever are made that any plans, features, amenities or facilities will be provided or, if provided, will be of the same type, size, location or nature as depicted or described herein. The sketches, renderings, graphic materials, plans, specifications, terms, conditions and statements contained are proposed only. and we reserve the right to modify, revise or withdraw any or all of same in our sole discretion and without prior notice.



NORTH LINE KEY: (03)  
SOUTH LINE KEY: (07)

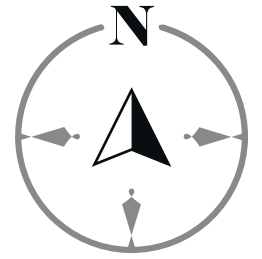


(1 BD/1 BTH)

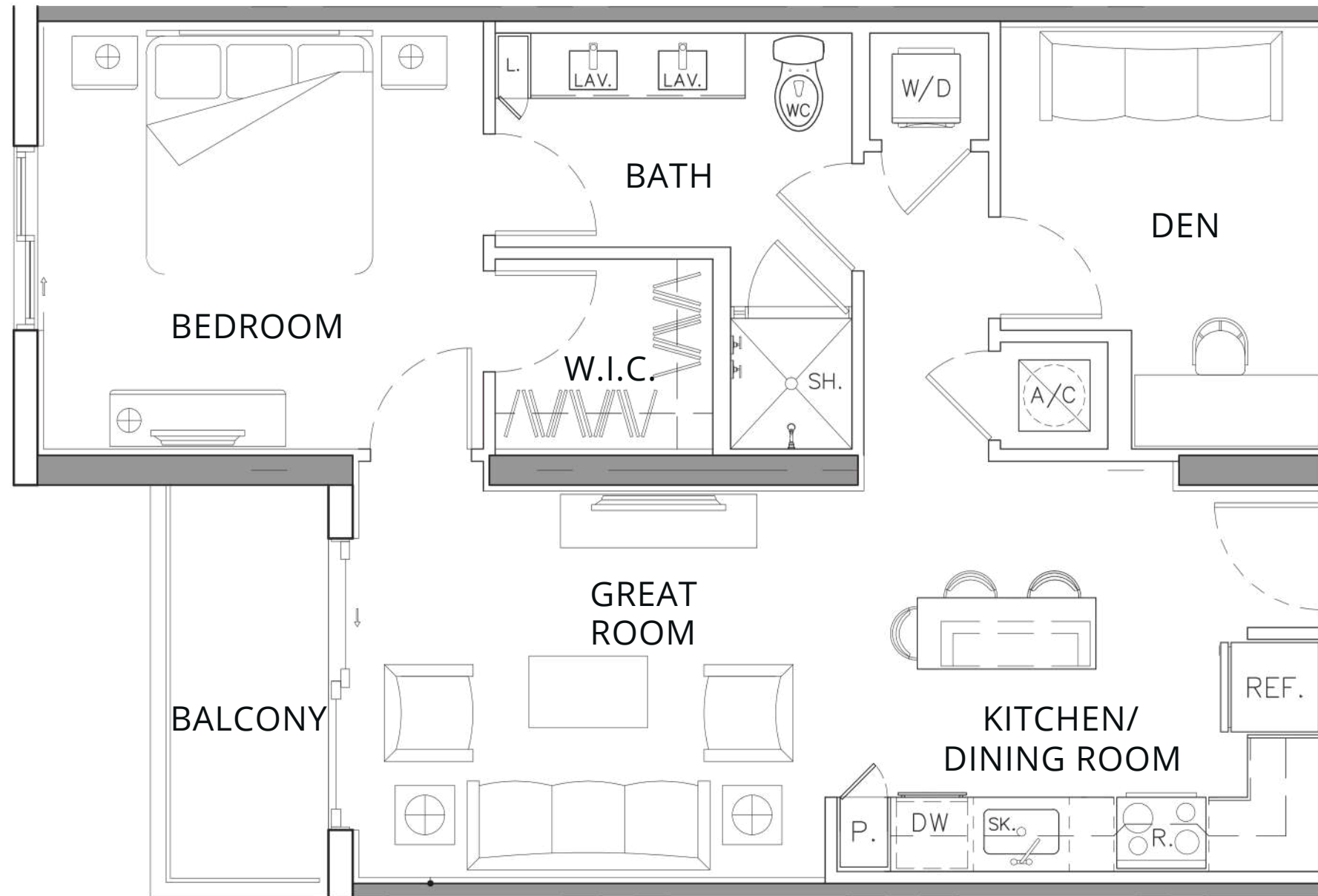
GROSS A/C AREA = 750 SQ. FT.  
BALCONY = 60 SQ. FT.

(40 DU'S)

All plans, features and amenities depicted herein are based upon preliminary development plans and are subject to change without notice in the manner provided in the offering documents by the developer. No guarantees or representations whatsoever are made that any plans, features, amenities or facilities will be provided or, if provided, will be of the same type, size, location or nature as depicted or described herein. The sketches, renderings, graphic materials, plans, specifications, terms, conditions and statements contained are proposed only, and we reserve the right to modify, revise or withdraw any or all of same in our sole discretion and without prior notice.



NORTH LINE KEY: (14 / 16)

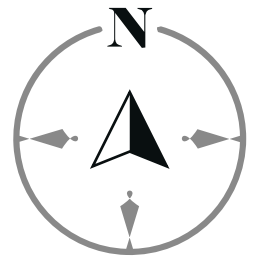


(1 BD/1 BATH 1 DEN)

GROSS A/C AREA = 827 SQ. FT.  
BALCONY = 58 SQ. FT.

(40 DU'S)

All plans, features and amenities depicted herein are based upon preliminary development plans and are subject to change without notice in the manner provided in the offering documents by the developer. No guarantees or representations whatsoever are made that any plans, features, amenities or facilities will be provided or, if provided, will be of the same type, size, location or nature as depicted or described herein. The sketches, renderings, graphic materials, plans, specifications, terms, conditions and statements contained are proposed only, and we reserve the right to modify, revise or withdraw any or all of same in our sole discretion and without prior notice.



NORTH LINE KEY:(04)

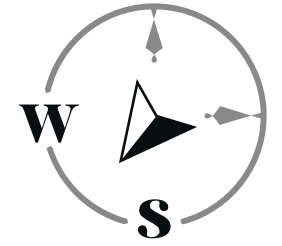


(2 BD/2 BTH)

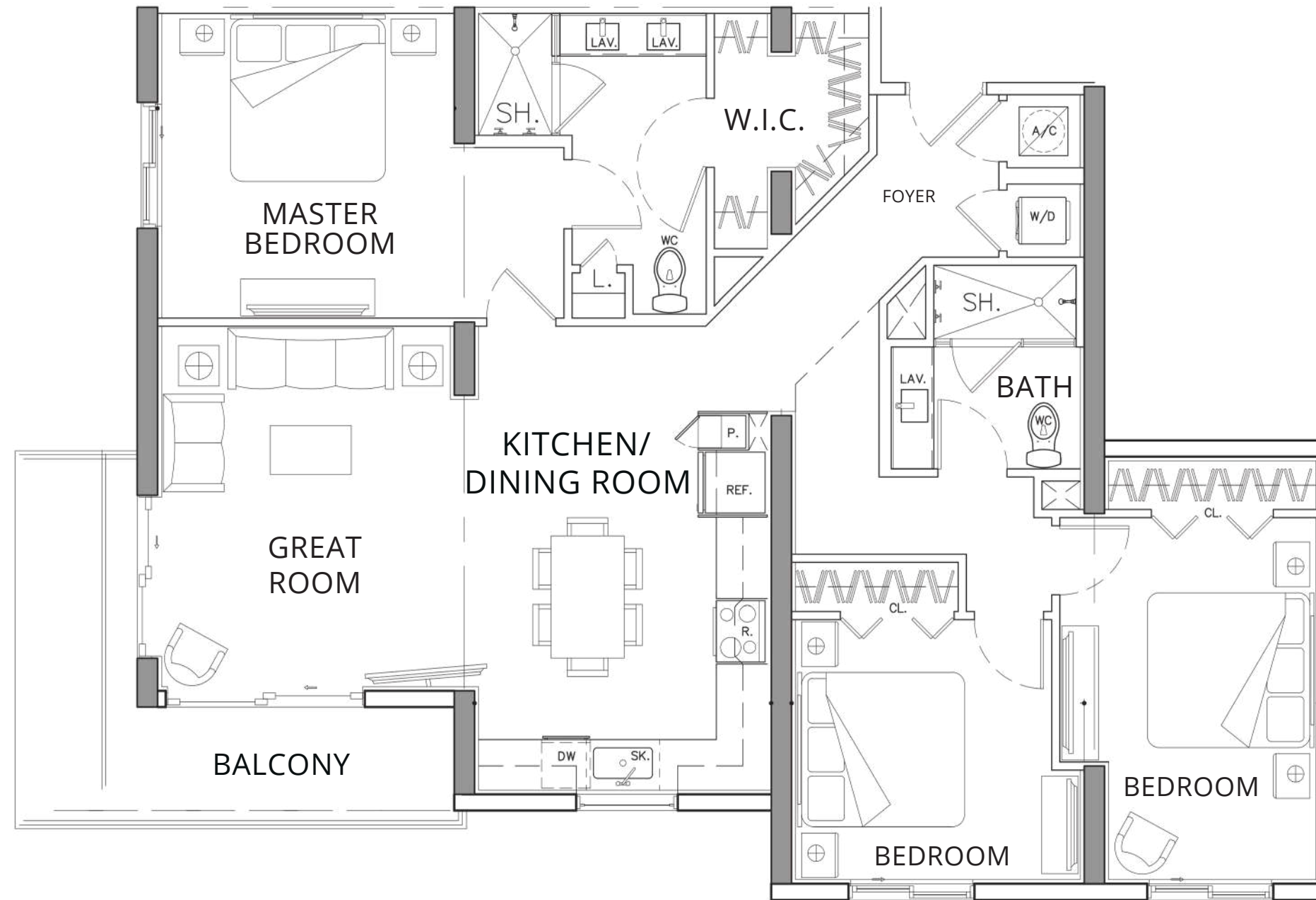
GROSS A/C AREA = 1071 SQ. FT.  
BALCONY = 65 SQ. FT.

(60 DU'S)

All plans, features and amenities depicted herein are based upon preliminary development plans and are subject to change without notice in the manner provided in the offering documents by the developer. No guarantees or representations whatsoever are made that any plans, features, amenities or facilities will be provided or, if provided, will be of the same type, size, location or nature as depicted or described herein. The sketches, renderings, graphic materials, plans, specifications, terms, conditions and statements contained are proposed only, and we reserve the right to modify, revise or withdraw any or all of same in our sole discretion and without prior notice.



SOUTH WEST LINE KEY: (12)



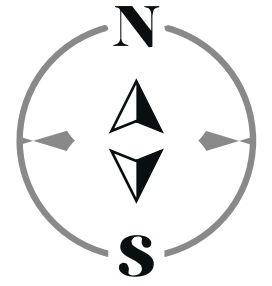
(3 BD/2 BTH)

GROSS A/C AREA = 1447 SQ. FT.  
BALCONY = 143 SQ. FT.

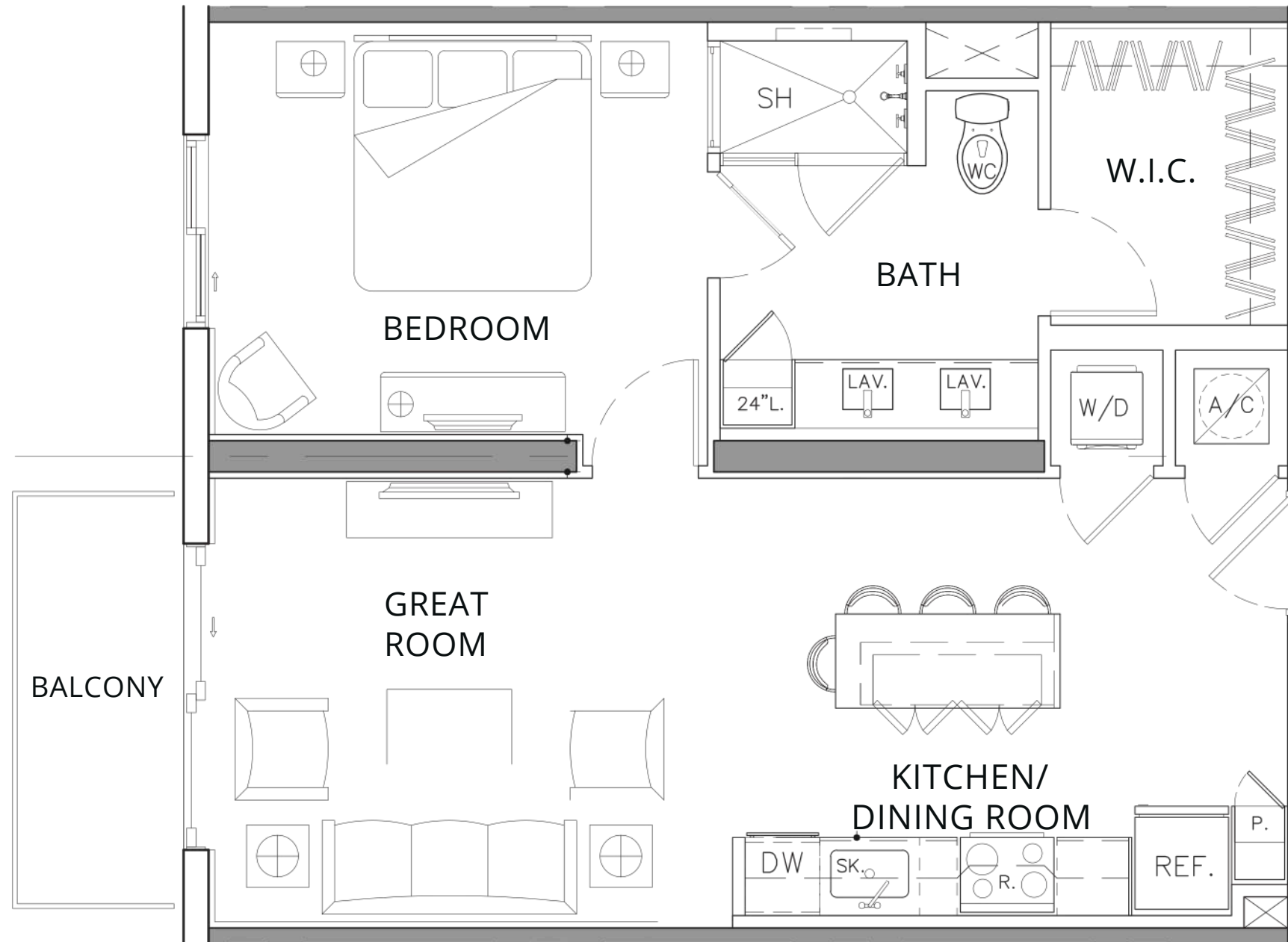
(19 DU'S)

All plans, features and amenities depicted herein are based upon preliminary development plans and are subject to change without notice in the manner provided in the offering documents by the developer. No guarantees or representations whatsoever are made that any plans, features, amenities or facilities will be provided or, if provided, will be of the same type, size, location or nature as depicted or described herein. The sketches, renderings, graphic materials, plans, specifications, terms, conditions and statements contained are proposed only, and we reserve the right to modify, revise or withdraw any or all of same in our sole discretion and without prior notice.

SHOMA  
bay



NORTH LINE KEY: (02)  
SOUTH LINE KEY: (08)

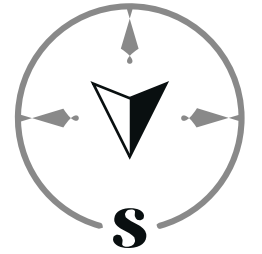


(1 BD/1 BIH)

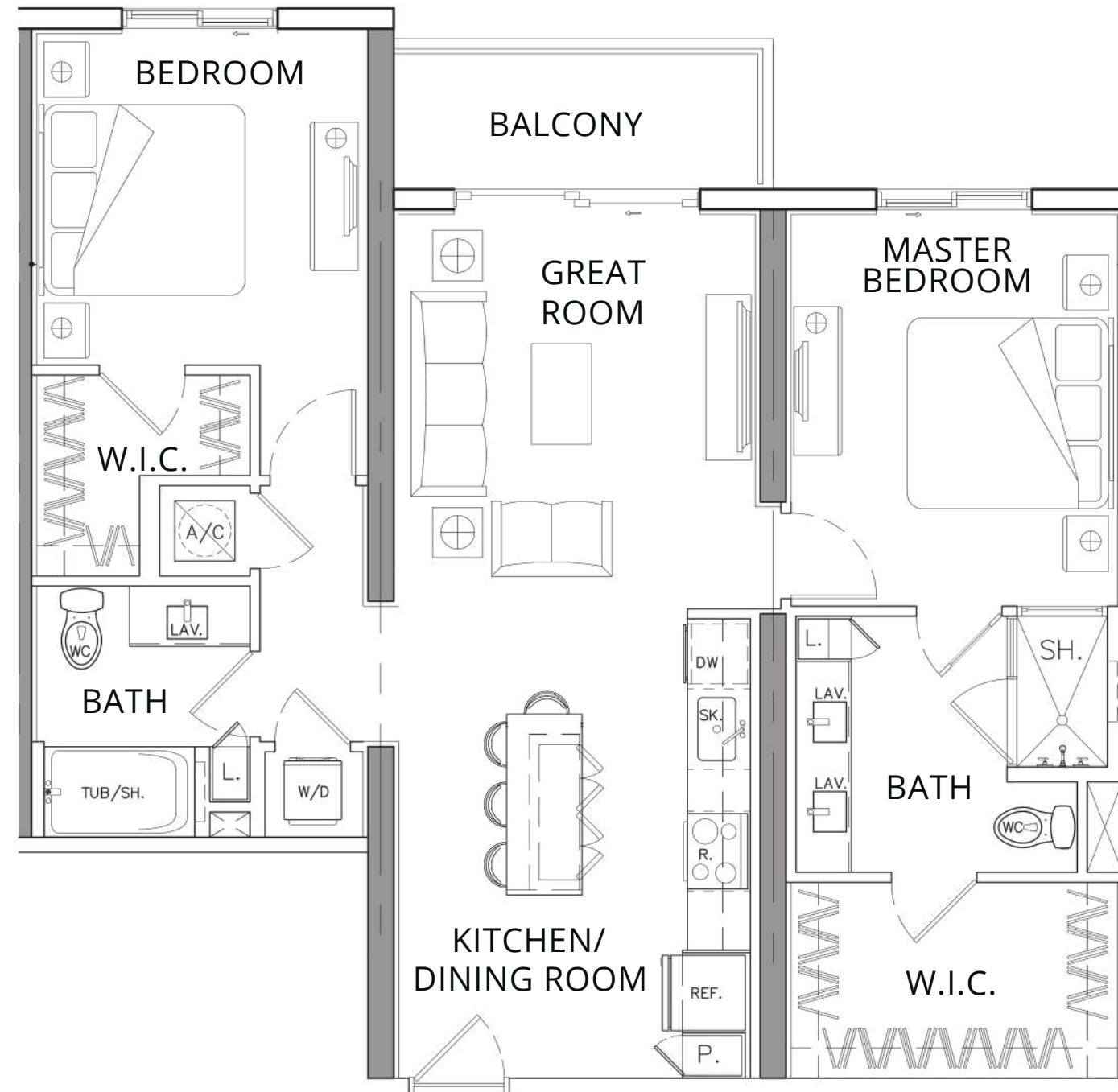
GROSS A/C AREA = 750 SQ. FT.  
BALCONY = 60 SQ. FT.

(40 DU'S)

All plans, features and amenities depicted herein are based upon preliminary development plans and are subject to change without notice in the manner provided in the offering documents by the developer. No guarantees or representations whatsoever are made that any plans, features, amenities or facilities will be provided or, if provided, will be of the same type, size, location or nature as depicted or described herein. The sketches, renderings, graphic materials, plans, specifications, terms, conditions and statements contained are proposed only. and we reserve the right to modify, revise or withdraw any or all of same in our sole discretion and without prior notice.



SOUTH LINE KEY: (06 / 09 / 10 / 11)

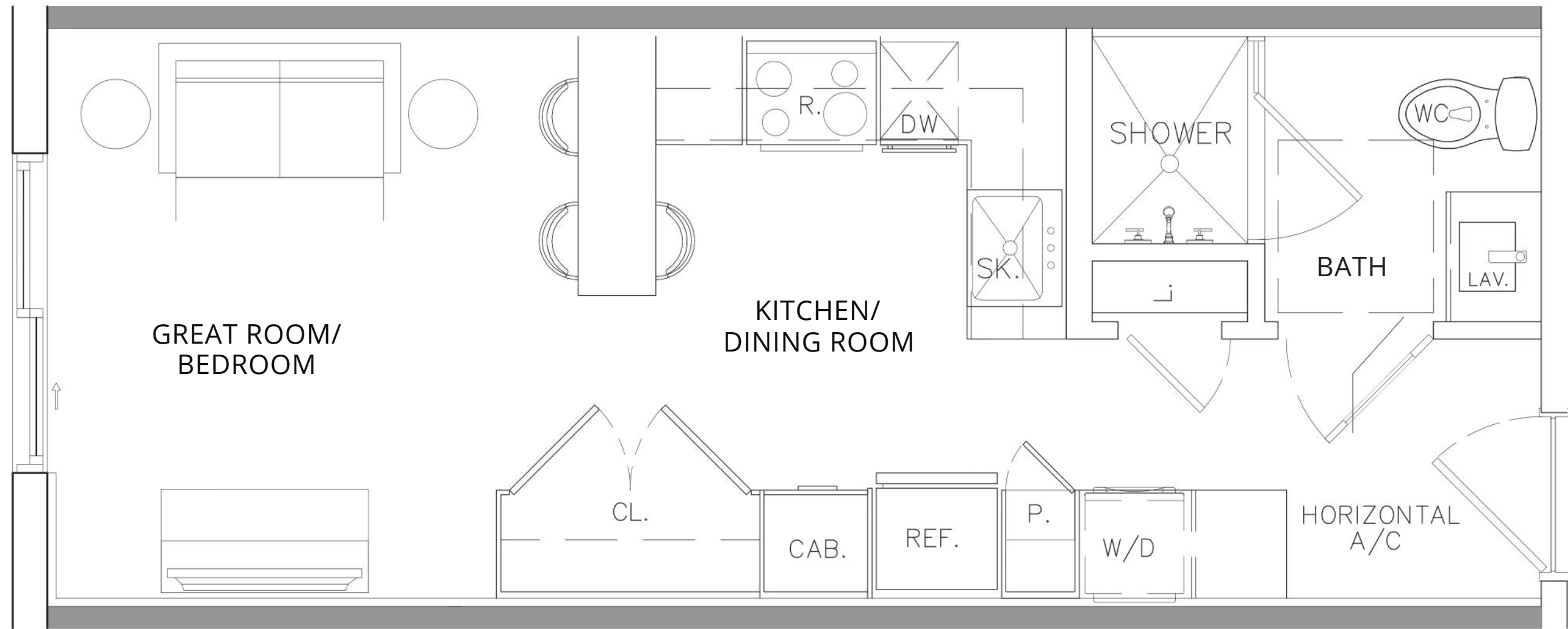
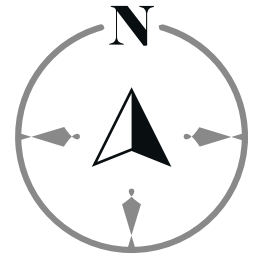


(2 BD/2 BTH)

GROSS A/C AREA = 1092 SQ. FT.  
BALCONY = 63 SQ. FT.

(40 DU'S)

All plans, features and amenities depicted herein are based upon preliminary development plans and are subject to change without notice in the manner provided in the offering documents by the developer. No guarantees or representations whatsoever are made that any plans, features, amenities or facilities will be provided or, if provided, will be of the same type, size, location or nature as depicted or described herein. The sketches, renderings, graphic materials, plans, specifications, terms, conditions and statements contained are proposed only, and we reserve the right to modify, revise or withdraw any or all of same in our sole discretion and without prior notice.



**STUDIO**

GROSS A/C AREA =360 SQ. FT.

**(0 BD/1 BTH)**

(40 DU'S)

All plans, features and amenities depicted herein are based upon preliminary development plans and are subject to change without notice in the manner provided in the offering documents by the developer. No guarantees or representations whatsoever are made that any plans, features, amenities or facilities will be provided or, if provided, will be of the same type, size, location or nature as depicted or described herein. The sketches, renderings, graphic materials, plans, specifications, terms, conditions and statements contained are proposed only. and we reserve the right to modify, revise or withdraw any or all of same in our sole discretion and without prior notice.

AGENDA UNA  
PRESENTACIÓN PRIVADA  
PARA CONOCER MÁS DE  
ESTE PROYECTO

---

SHOMA  
*bay*

TELÉFONOS

+1 (646) 399-0154  
+1 (888) 883-8509

DIRECCIÓN

P.O.Box 824408,  
Pembroke Pines,  
Florida 33082 Estados Unidos

CORREO ELECTRÓNICO

[marieltavarezrealtor@gmail.com](mailto:marieltavarezrealtor@gmail.com)

